



# **North Reading Open Space and Recreation Plan**

---

## **Public Meeting #1**

December 5, 2019

Ella Wise

Metropolitan Area Planning Council

## Tonight's Agenda

---

1. Get to know your neighbor
2. Presentation
3. Discussion
4. Open House stations
5. Next steps

# Get to know your neighbor

---

Name &  
Favorite park, trail, or open space





# **Open Space and Recreation Plans**

# What is open space?

---



# Why complete an Open Space and Recreation Plan (OSRP)?

---

1. Support community protection and **stewardship** of vital resources
  - Identifies where you are
  - Where you want to go
  - How to get there over next 7 years
2. Completion of an OSRP makes municipalities **eligible to apply for State grants** to acquire and improve land for conservation and recreation



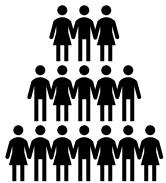
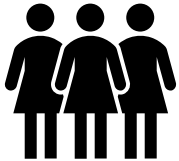
## Town of North Reading Open Space and Recreation Plan

Prepared by Brown Walker Planners, Inc. with the North  
Reading Open Space Plan Committee

March 2013

# Who is writing the OSRP?

---



- Metropolitan Area Planning Council
  - Ella Wise
  - Ralph Willmer
- OSRP Committee
  - Town Staff: Danielle McKnight, Maureen Stevens, Marty Tilton
  - Public members: Liane Gonzalez, Rita Mullin, Randy Mason, Phil Hertz
- Public
  - YOU!!!

# What is the planning process?

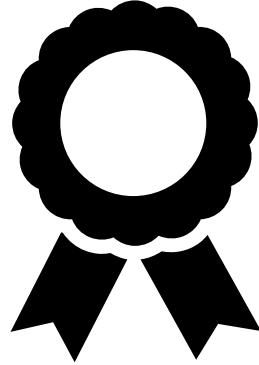
---





**550 survey responses**

---

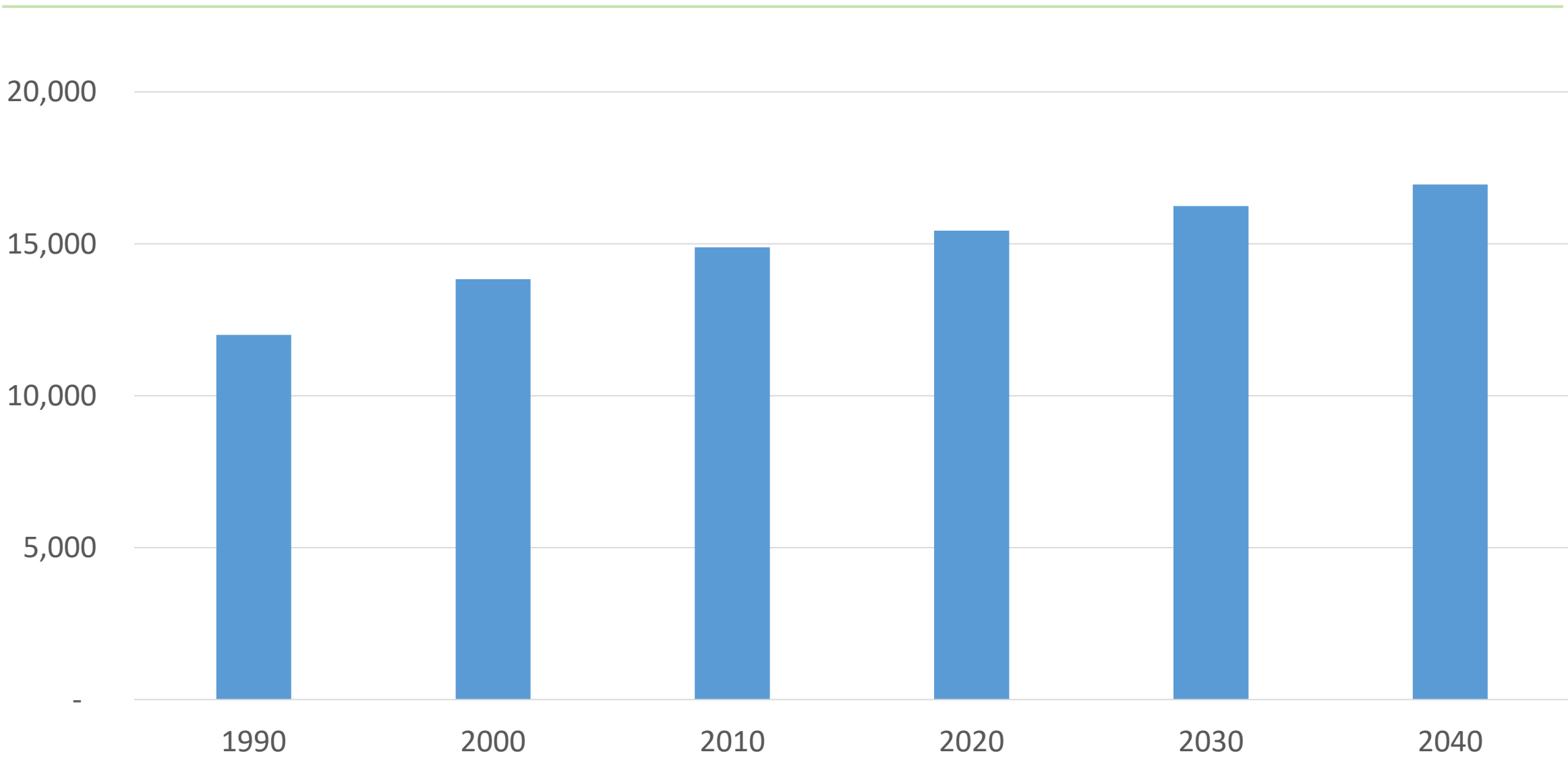


- That's more than 1 in 30 residents
- THANK YOU to Committee members

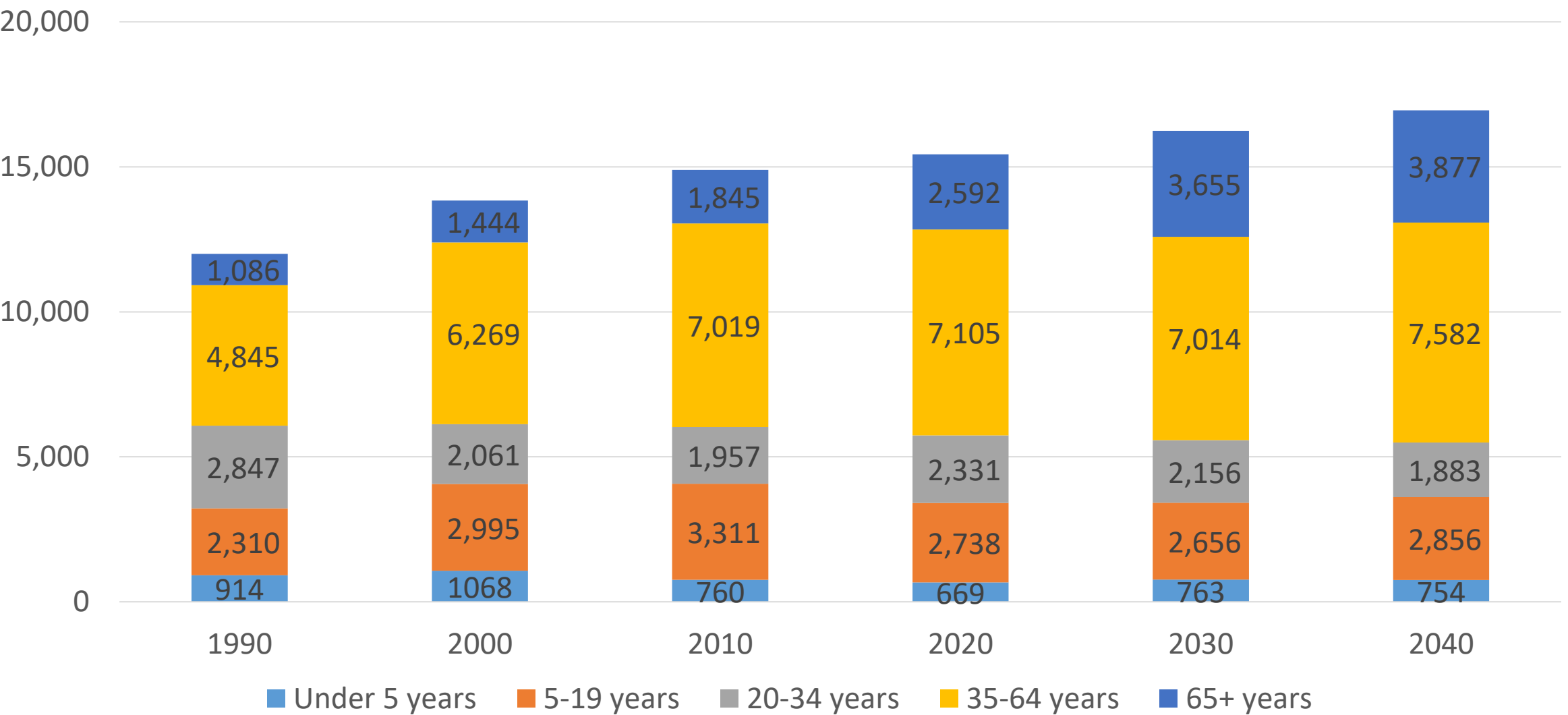


# Existing Conditions

# Historical and Projected Population



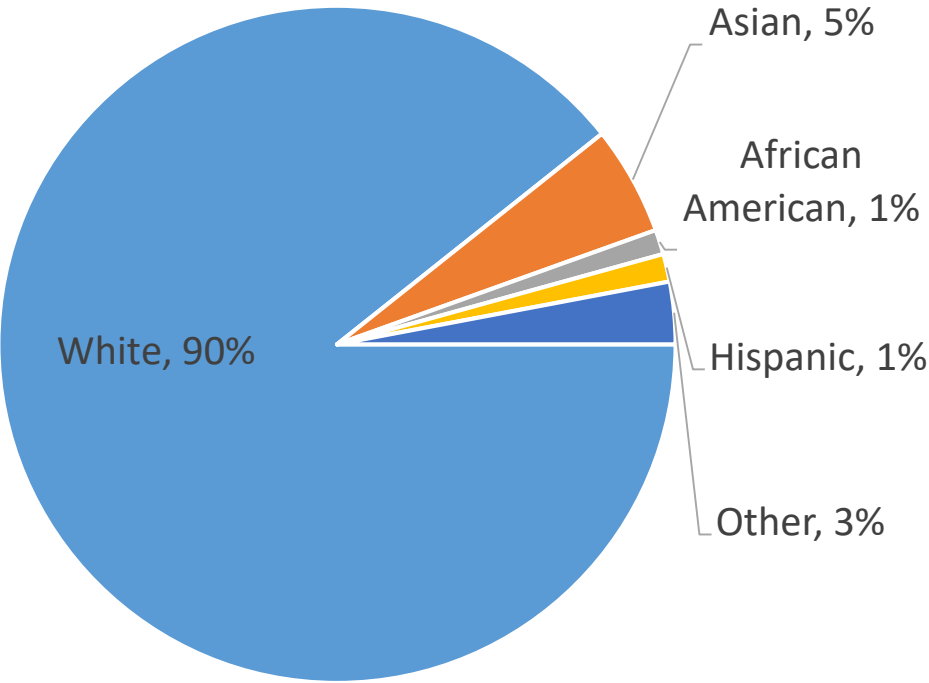
# Historical and Projected Population by Age Group



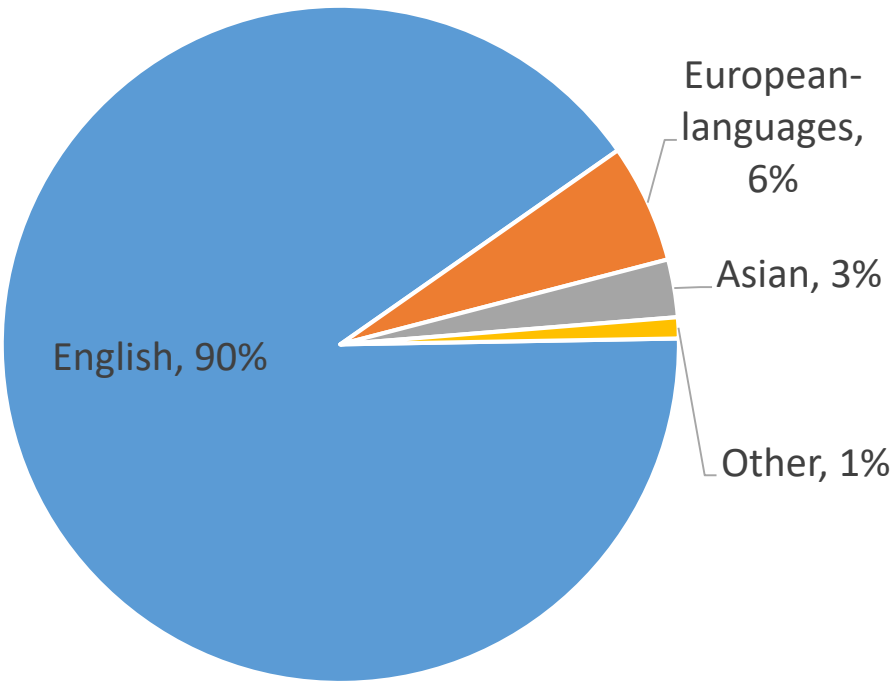
Source: MAPC, 2011

# Demographics

% Population by Race



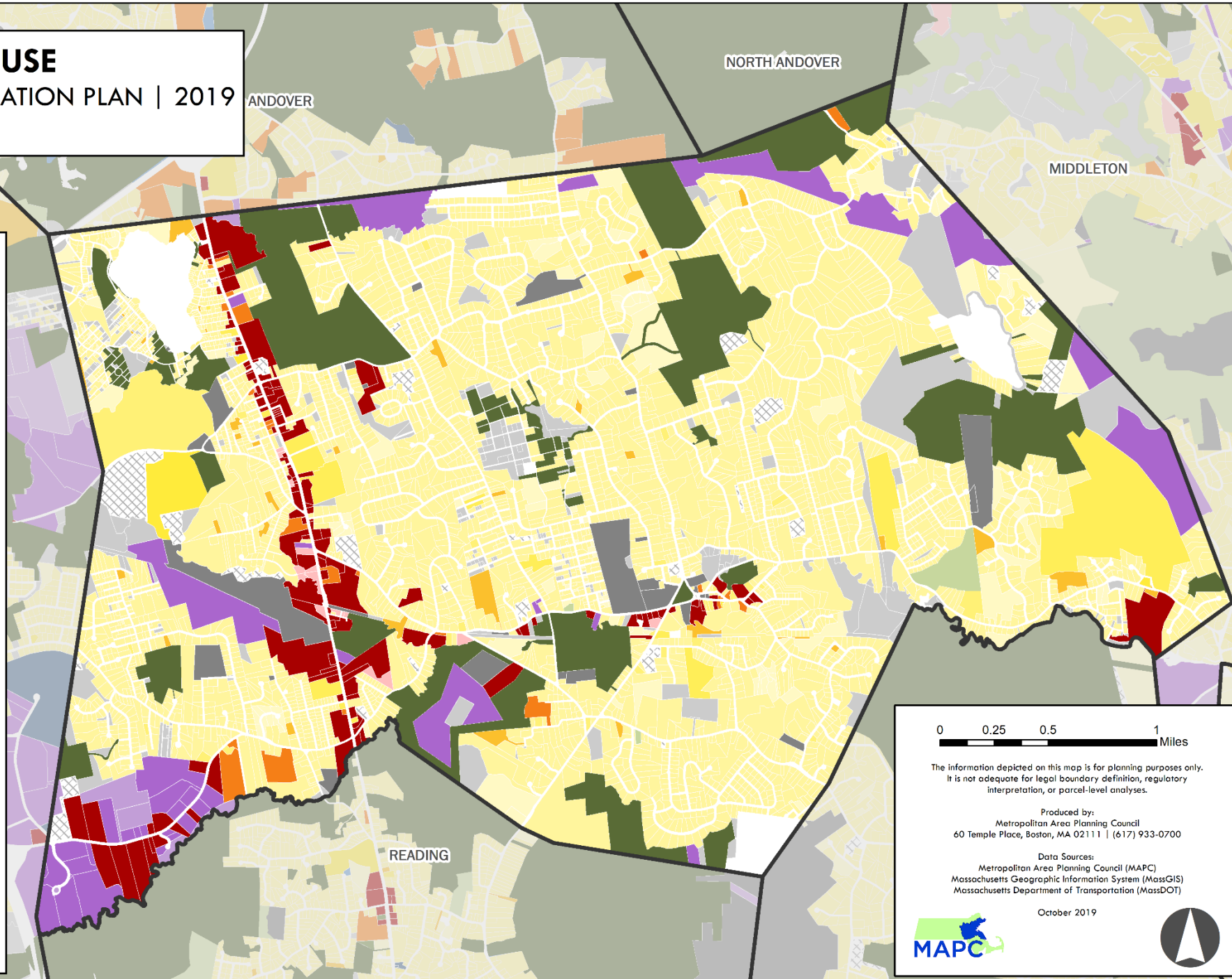
% Population by Language Spoken at Home



Source: U.S. Census American  
Community Survey

# EXISTING LAND USE

OPEN SPACE & RECREATION PLAN | 2019  
NORTH READING, MA



0 0.25 0.5 1 Miles

The information depicted on this map is for planning purposes only.  
It is not adequate for legal boundary definition, regulatory  
interpretation, or parcel-level analyses.

Produced by:  
Metropolitan Area Planning Council  
60 Temple Place, Boston, MA 02111 | (617) 933-0700

Data Sources:  
Metropolitan Area Planning Council (MAPC)  
Massachusetts Geographic Information System (MassGIS)  
Massachusetts Department of Transportation (MassDOT)

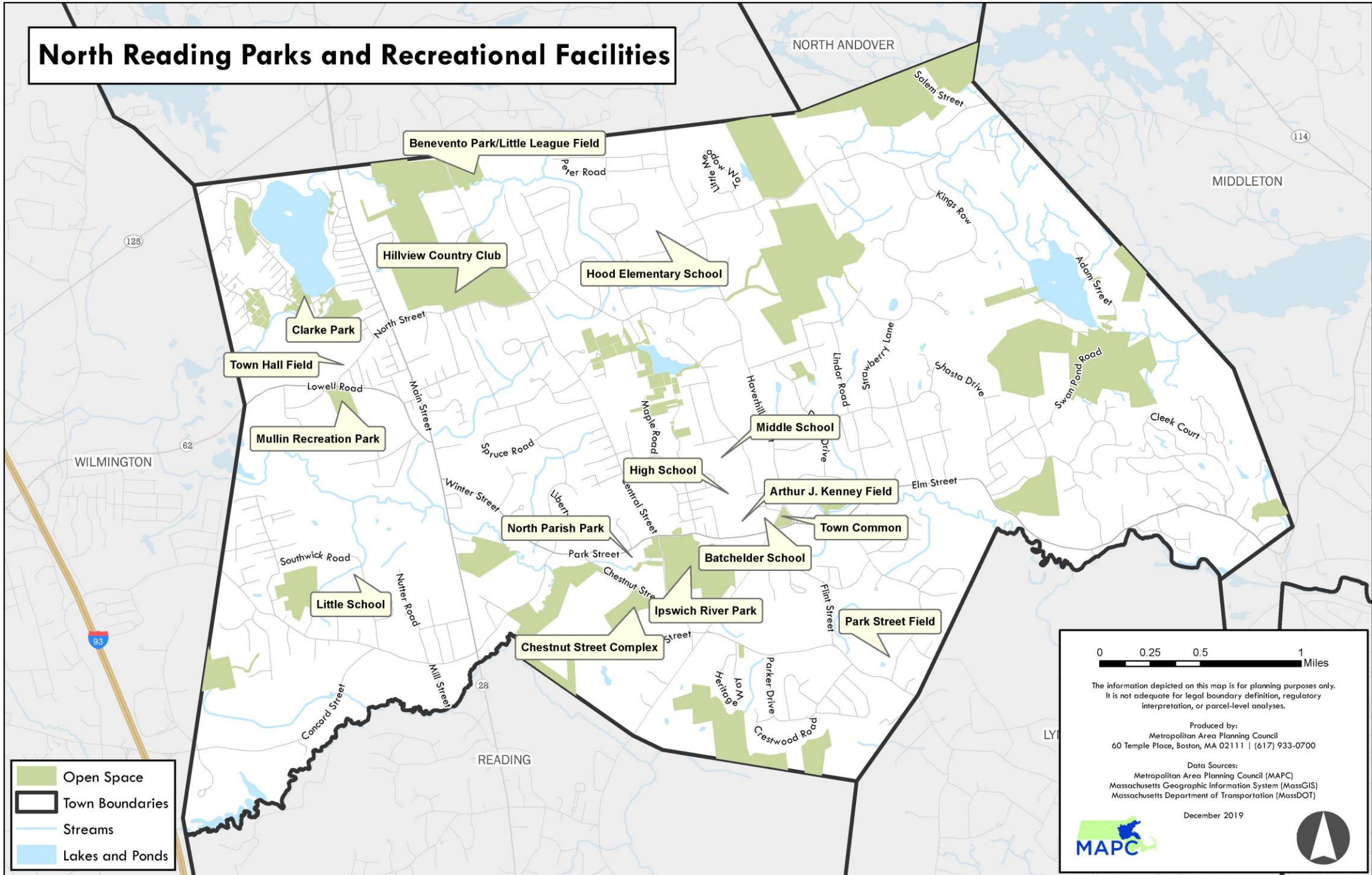
October 2019





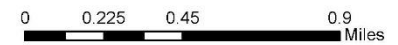
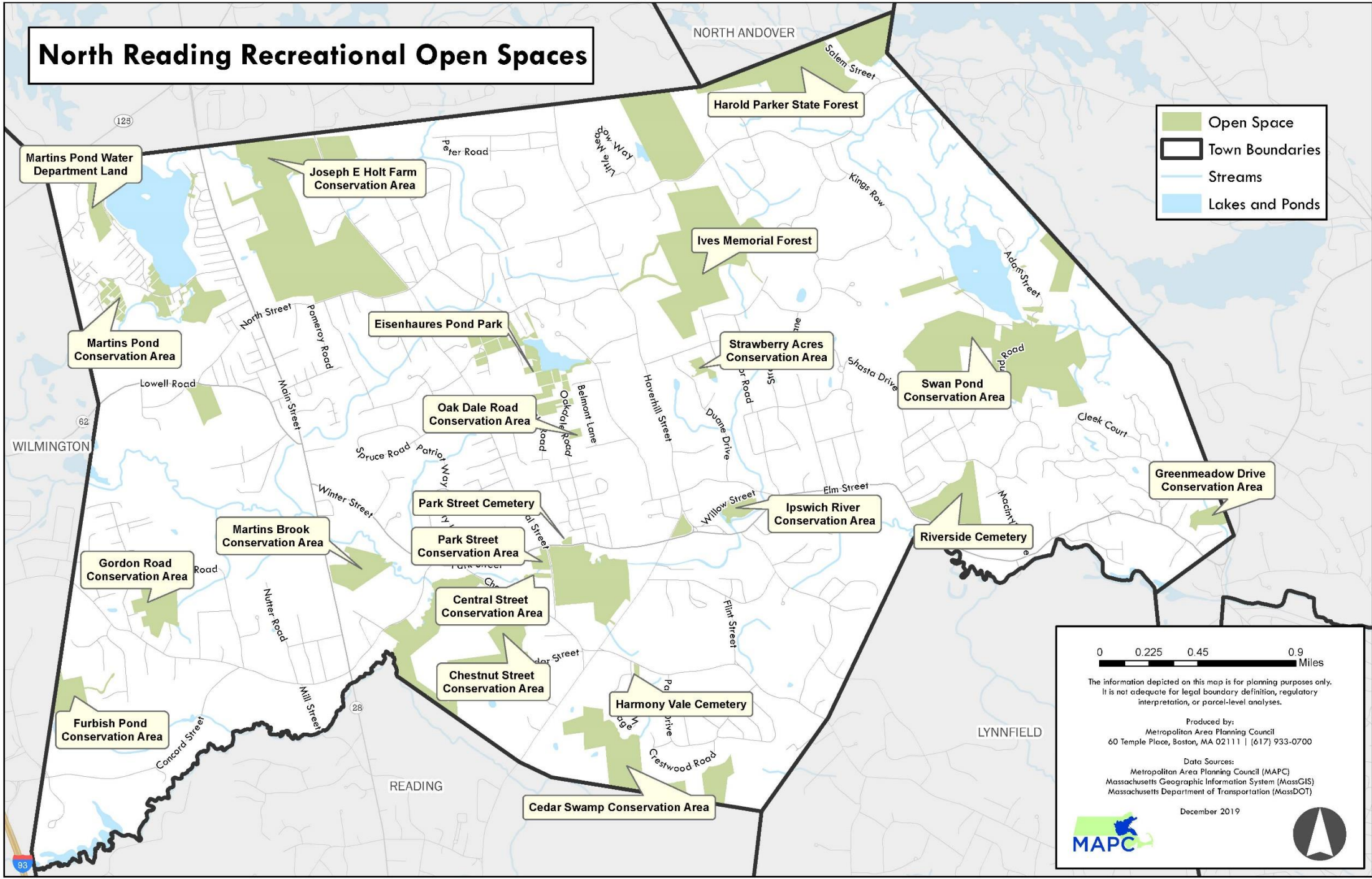
# Open Space Inventory

# North Reading Parks and Recreational Facilities



# North Reading Recreational Open Spaces

- Open Space
- Town Boundaries
- Streams
- Lakes and Ponds



The information depicted on this map is for planning purposes only. It is not adequate for legal boundary definition, regulatory interpretation, or parcel-level analyses.

Produced by:  
Metropolitan Area Planning Council  
60 Temple Place, Boston, MA 02111 | (617) 933-0700

Data Sources:  
Metropolitan Area Planning Council (MAPC)  
Massachusetts Geographic Information System (MassGIS)  
Massachusetts Department of Transportation (MassDOT)

December 2019



## Key Sites: Ipswich River Park

---



- Town owned
- 50 acres
- Paved trail, playground, pavilion, soccer fields, and more

## Key Sites: Benevento Memorial Field

---



- Town owned
- 12 acres
- Publicly accessible
- Baseball fields, concession stand, pavilion, and bathrooms

## Key Sites: Harold Parker State Forest

---



- State owned
- 2,050 acres
- Forested land that extends into a larger park in North Andover

## Key Sites: Swan Pond Conservation Area

---



- Town owned
- 370 acres
- Publicly accessible
- Forested land

A scenic view of a lake with a wooden dock and reeds in the foreground, and a forested shoreline in the background. The text "Open House" is overlaid in the center.

# Open House

# Activities

---

1. Group discussion
2. Open House Stations

# Activities

---

## 1. Group discussion

- STRENGTHS: existing resources
- WEAKNESSES: existing needs or areas of improvement
- OPPORTUNITIES: external factors that could be of benefit
- THREATS: external factors that could have negative impacts

## 2. Open House Stations

# Activities

---

1. Group discussion
2. Open House stations
  - Station 1 Goals & Objectives
  - Station 2 Scenic & Unique Features
  - Station 3 Open Space Mapping

## Next steps

---

1. Take the survey: [mapc.ma/parksurvey](https://mapc.ma/parksurvey)
2. Come to the next public forum in February
3. Ask questions:

Danielle McKnight, Town Planner, North Reading

[dmcknight@northreadingma.gov](mailto:dmcknight@northreadingma.gov) (978) 357-5206

Ella Wise, Senior Land Use Planner, MAPC

[ewise@mapc.org](mailto:ewise@mapc.org) (617) 933-0772