

Affordable Housing Overlay District

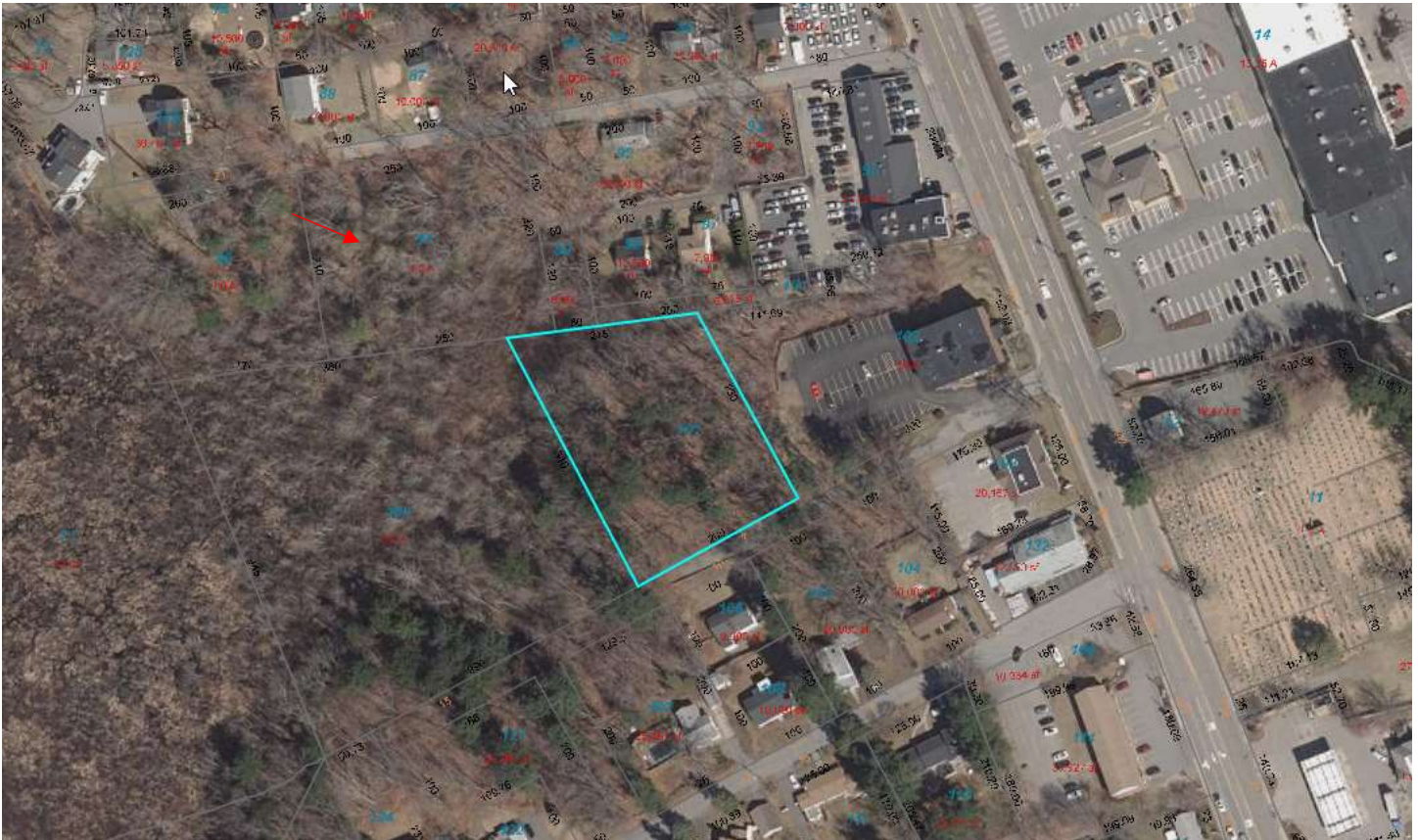
Properties Proposed for Disposition

October 4, 2021 Town Meeting

7 Saint Theresa Street, Map 13 Parcel 101

Size: 53,768 square feet

Frontage: approximately 160 feet on Saint Theresa Street, an unaccepted way

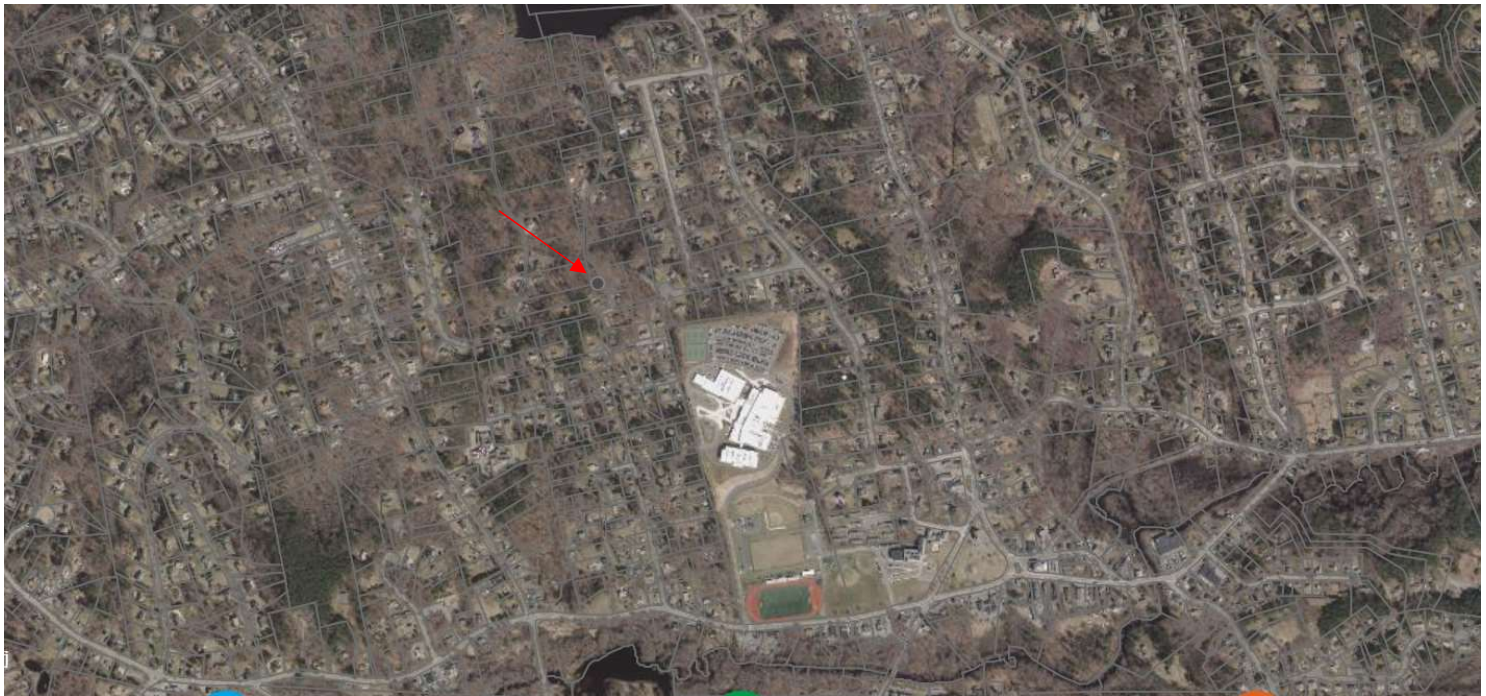
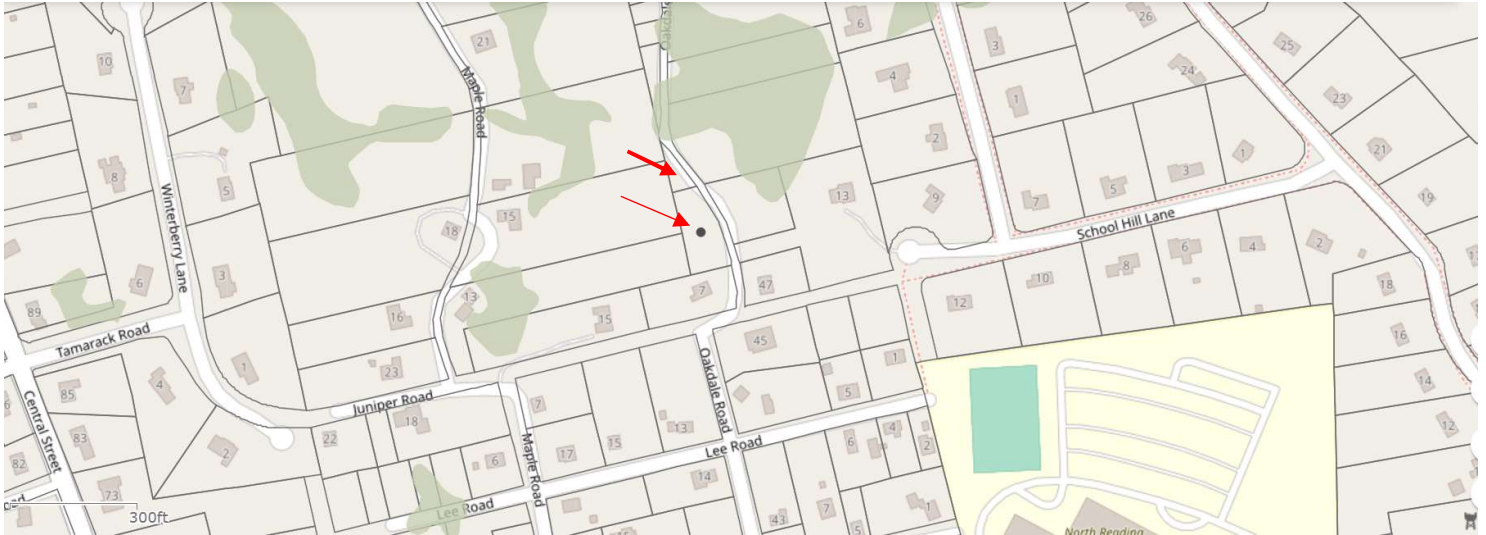


44 Oakdale Road, Map 43 Parcel 031, 17,255 square feet; and

46 Oakdale Road, Map 43 Parcel 032, 3,590 square feet

Size: 17,255 square feet and 3,590 square feet, for a total of 20,845 square feet

Frontage: approximately 355 feet of frontage on Oakdale Road, a private way.



57 Haverhill Street, Map 40 Parcel 067

Size: 231,449 square feet

Frontage: 275 feet on Haverhill Street, an accepted public way

